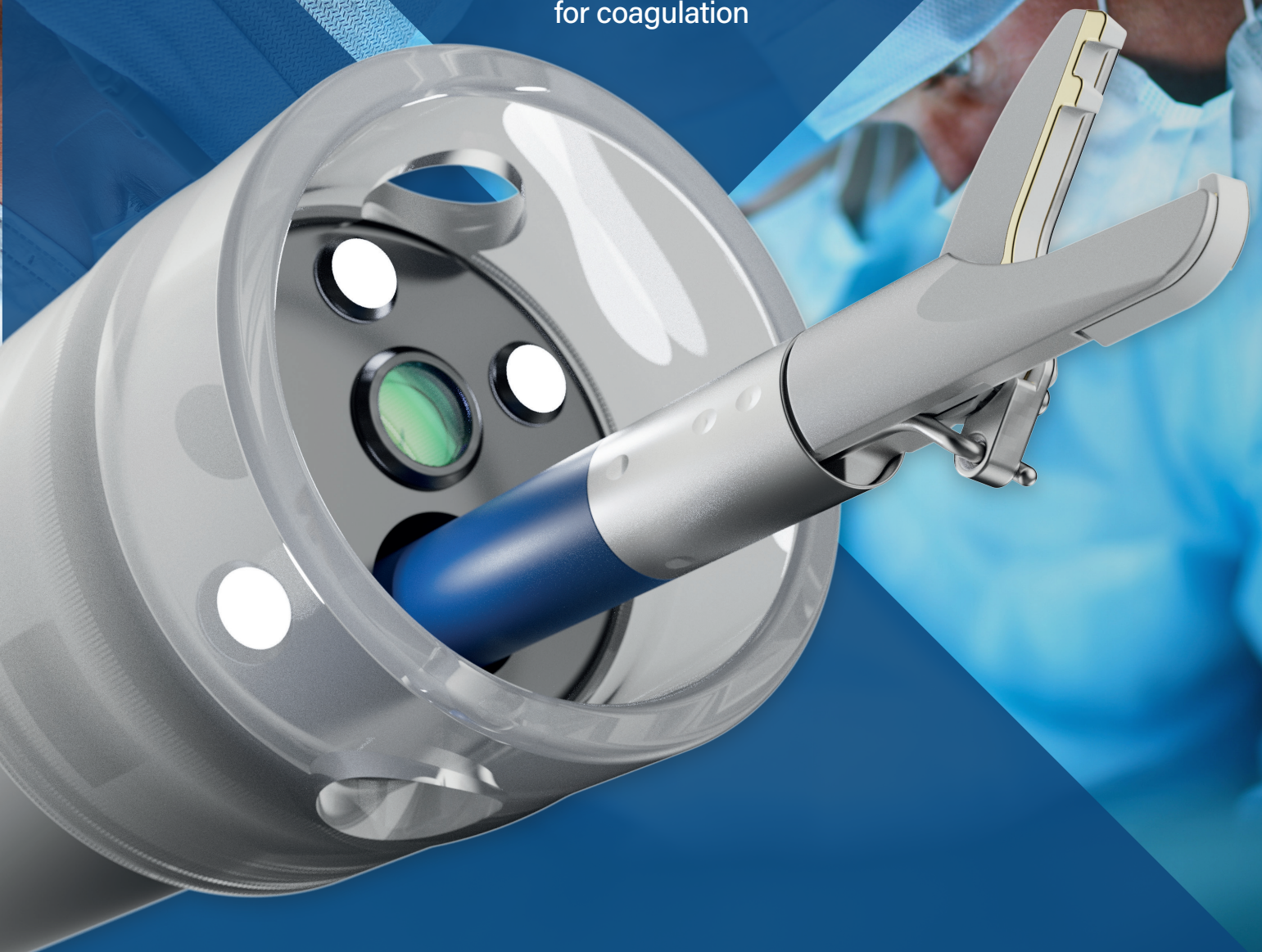




SpydrBlade™
Flex

The most versatile dissection tool in flexible endoscopy

Unique multi-modal Endoscopic device
with advanced bipolar RF for cutting and
super high frequency 5.8GHz microwave
for coagulation



Anything is Possible
with the Right Approach



CREO
MEDICAL

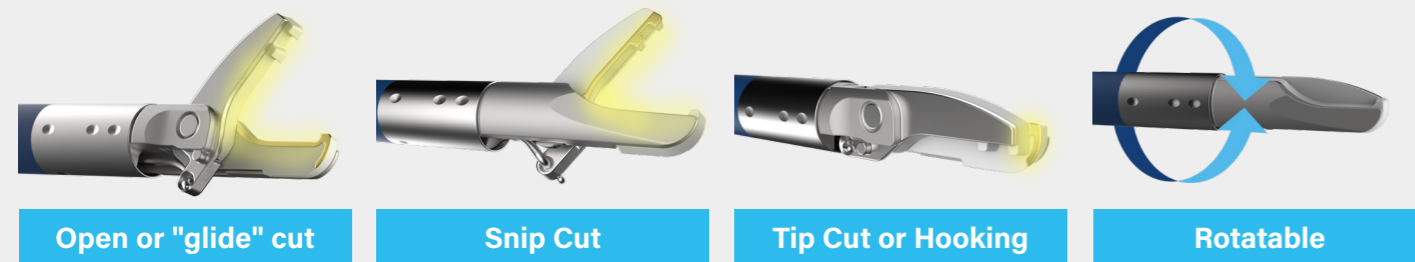
SpydrBlade Flex: Versatility

The most versatile dissection tool in flexible endoscopy

The SpydrBlade™ Flex is a unique multi-modal endoscopic device designed for precision and adaptability in endoscopic procedures. It integrates CROMA's innovative advanced bipolar RF cutting technology with super high-frequency (SHF) 5.8GHz microwave coagulation, offering a versatile solution with multiple options for handling complex tissue resections or achieving haemostasis in a single device.

- SpydrBlade Flex provides **increased protection of the muscle layer** and is designed to provide high levels of safety and performance.
- Designed to perform safe, precise, contact cut with **clean margins** to provide **high quality histology samples** and **help healing rates**.
- 5.8 GHz Microwave enables **controlled penetration depth**, unaffected by tissue resistance, **reducing perforation and charring risks**.
- **Fast delivery of coagulation** with controlled spread and depth of penetration to **prevent or treat bleeding immediately** without changing devices.
- Adaptive waveform automatically adjusts parameters to tissues and balances coagulation during cutting to **minimise bleeding**.
- Insulated hull **protects the muscle bed** from unwanted thermal injury, allowing cutting close to the muscle bed.

Precise advanced bipolar RF cutting



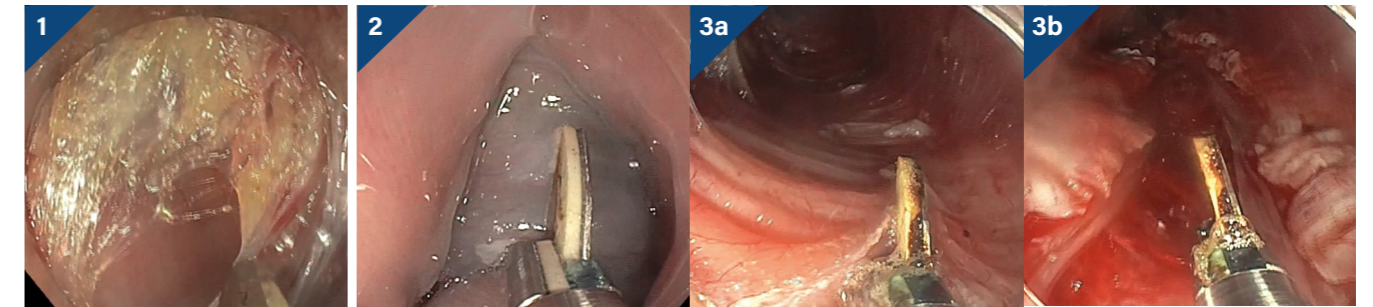
Controlled SHF microwave coagulation



SpydrBlade Flex: Precision

Precise advanced bipolar RF cutting

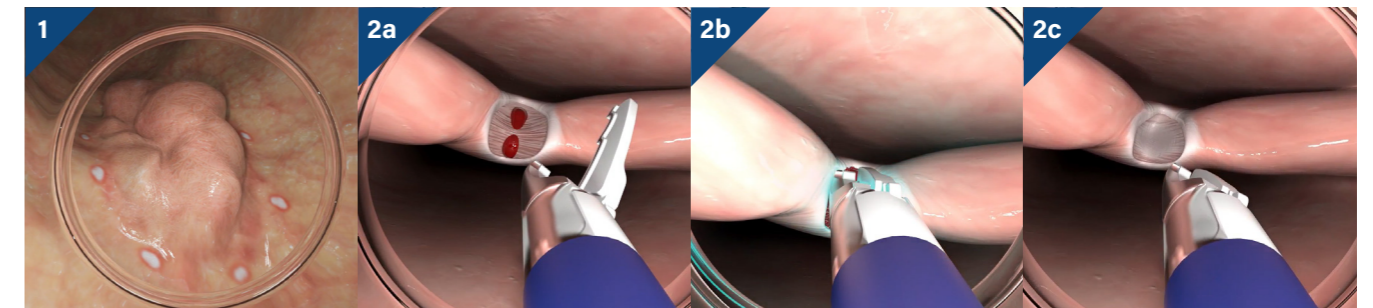
The blade design controls the depth of penetration and provides a focused pathway of energy delivery at lower voltage <460 V. The voltage/current is adjusted based on tissue impedance automatically to maintain power density for a smooth, effective and precise cut.



Images: 1. Tip Cut 2. Open/Close cut (Snip) 3a/b. Open Cut

Controlled SHF microwave coagulation

SHF 5.8 GHz microwave energy distributes heat evenly across the treatment area. The microwave energy is delivered through both jaws, allowing for application of energy between the jaws, or through the distal end.



Images: 1. Tissue marking with coagulation through the tip 2a-c. Coagulation through the jaw closed

CROMA™ Advanced Energy Platform: The power behind SpydrBlade Flex

The CROMA Advanced Energy Platform precisely controls advanced bipolar RF and SHF 5.8 GHz microwave energy to enable a suite of flexible endoscopic devices designed to deliver:

- A unique **usability and safety profile**¹⁻⁶
- Optimal **tissue effect**¹⁻⁶
- Improved **clinical and economic outcomes**⁶
- **Expanded capabilities** in therapeutic endoscopy

Find out more:





Specifications

Specification	SpydrBlade Flex
Product Reference	PRD-RG1-001
Min. Scope Channel Size	3.2mm
Max Catheter Size	2.7mm
Working Length	1.8m
Advanced Bipolar RF (Cut)	15 -35 Watts
Super High Frequency Microwave (Coag)	08 – 10 Watts

Visit: www.creomedical.com for more information

References

1. Data on file
2. Microwave coagulation of blood vessels during advanced colonoscopic polypectomy: first results in humans. Zacharias P. Tsiamoulos et al. published in United European Gastroenterology Journal; 2016; 2 (Supplement 1). [https://www.giejournal.org/article/S0016-5107\(17\)31361-5/pdf](https://www.giejournal.org/article/S0016-5107(17)31361-5/pdf)
3. A new approach to endoscopic submucosal tunneling dissection: the "Speedboat-RS2" device. Zacharias P. Tsiamoulos et al. published in Endoscopy. <https://www.thieme-connect.de/products/ejournals/html/10.1055/a-0875-3352>
4. Endoscopic submucosal tunneling dissection: use of a novel bipolar radiofrequency and microwave-powered device for colorectal endoscopic submucosal dissection. Thomas R. McCarty, Hiroyuki Aihara. Published in Video GIE, official video journal of the American Society of Gastrointestinal Endoscopy. [https://www.videogie.org/article/S2468-4481\(20\)30090-4/fulltext](https://www.videogie.org/article/S2468-4481(20)30090-4/fulltext)
5. Tsiamoulos et al. First results using Speedboat Tunneling technique in colorectal submucosal dissection – clinical outcomes and procedure time prediction models. Poster presented at UEG 2020. <https://ueg.eu/library/first-results-using-speedboat-tunneling-technique-in-colorectal-submucosal-dissection-clinical-outcomesandprocedure-time-prediction-models/240928>
6. Cost-effectiveness analysis of Speedboat submucosal dissection in the management of large non-pedunculated colorectal polyps, based on 50 patients. Authors: Amir Ansari-pour, Mehdi Javanbakht, Adam Reynolds, Zacharias Tsiamoulos. Data on file.

Creo Medical Ltd.

Unit 2, Creo House
Beaufort Park Way
Chepstow
NP16 5UH, UK
+44 (0) 1291 637 300
customerservice@creomedical.com

Creo Medical Inc.

100 Reserve Road
Suite B400
Danbury,
CT 06810, USA
+1 866-226-1170
UScustomerservice@creomedical.com

Creo Medical Pte Ltd.

Creo Medical Pte Ltd.
8 Commonwealth Lane
#04-03C
Singapore 149555
customerservice@creomedical.com



@CreoMedical



@CreoEndoscopy



showcase/creo-endoscopy



company/creo-medical