

# EndoCap

## Endoscopic distal attachments

**Designed to be installed on the distal end of endoscopes,** distal attachments maintain a good endoscopic field of view and provide assistance during therapeutic procedures.

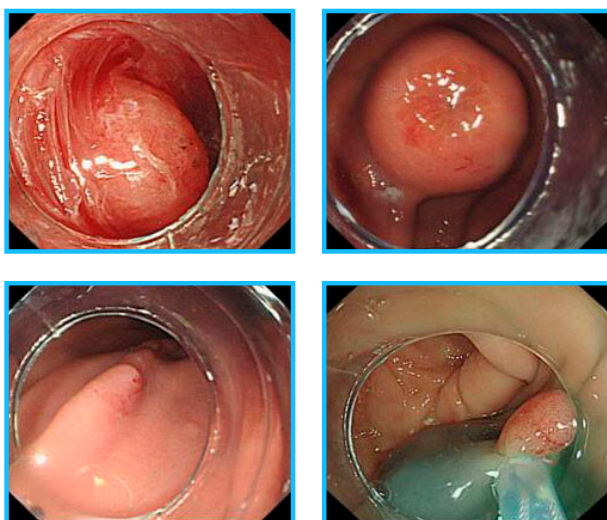


CREO  
MEDICAL

## EndoCap

### Endoscopic distal attachments

Reference	External Ø of the attachment (mm)	Length of the attachment (mm)	Distal extremity Ø of the endoscope (mm)	Colour code	PKG
DC-092-40	11,35	4	8,9 – 9,5 mm	Light Blue	10
DC-098-40	11,98	4	9,6 – 10,0 mm	Rose Red	10
DC-099-40	12,30	4	9,9 – 10,5 mm	Dark Purple	10
DC-105-40	12,40	4	10,3 – 10,7 mm	Yellow	10
DC-108-40	12,58	4	10,7 – 11,1 mm	Light Purple	10
DC-115-40	13,20	4	11,3 – 11,7 mm	Pink	10
DC-118-40	13,85	4	11,6 – 12,0 mm	Navy Blue	10
DC-122-40	13,90	4	12,1 – 12,5 mm	Orange	10
DC-128-40	14,50	4	12,6 – 12,9 mm	Light Green	10
DC-132-40	14,60	4	13,0 – 13,5 mm	Dark Green	10
DC-148-40	16,50	4	14,6 – 15,0 mm	Red	10



## Characteristics

- ▶ **Assists in opening colon folds** during colonoscopies, to improve lesion detection rate and facilitate resection.
- ▶ **Improves mucosal exposure** during therapeutic procedures.
- ▶ **Maintains a constant distance** between the endoscope and the mucosa.
- ▶ **Side port** to enable fluid drainage.

**Designation:** Disposable Endoscopic distal attachment. **Indications:** The distal attachments are installed on the distal end of endoscopes for maintaining a good field of viewing. **Class:** IIa. **Notified body:** CE0197. **Manufacturer:** Shangxian Minimal Invasive Inc. **Use:** Before use, carefully read the instructions for use or labelling of the device. **Version :** EC\_E\_1. Rev.01. Date 09-03-23

Creo Medical authorised local distributor

**Creo Medical UK Ltd**

Chestnut House, N.Minster Business Pk.

YO26 6QR York, United Kingdom

**Email:** info.uk@creomedical.com

**Tel:** +44 (0) 1904 786888

Technical changes and mistakes reserved. Images may show non standard options.

